

# MAIN COMPONENTS



**GAS TURBINES FLANGE TO FLANGE**

**GENERATORS**

**REDUCTION GEARS**

**ACCESSORY GEAR BOXES**



# GAS TURBINES FLANGE TO FLANGE



**HITACHI GAS TURBINE UNIT (EX-UNIT MAY 4-1)**

**MODEL SERIES 5000**

**SIMPLE-CYCLE, SINGLE SHAFT**

**F 5001, TYPE N CONVERTED TO TYPE PN/T**







# GAS TURBINES FLANGE TO FLANGE



## HITACHI GAS TURBINE UNIT (EX-UNIT MAY 4-2)

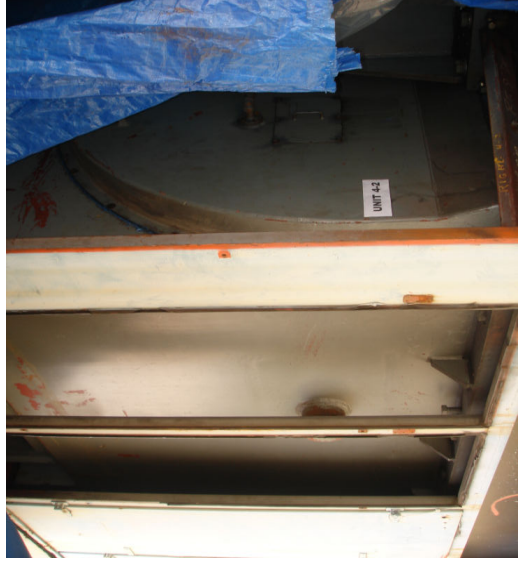
**MODEL SERIES 5000**

**SIMPLE-CYCLE, SINGLE SHAFT**

**F 5001, TYPE N CONVERTED TO TYPE PN/T**



# GENERATORS



## HITACHI TURBINE GENERATOR (EX-UNIT MAY 4-2)

TYPE EFZB1LA  
OUTPUT KVA 27687  
FREQUENCY 60 HZ.  
VOLTAGE 13200  
EX. VOLTAGE 270  
MFG. NO. 161196-1

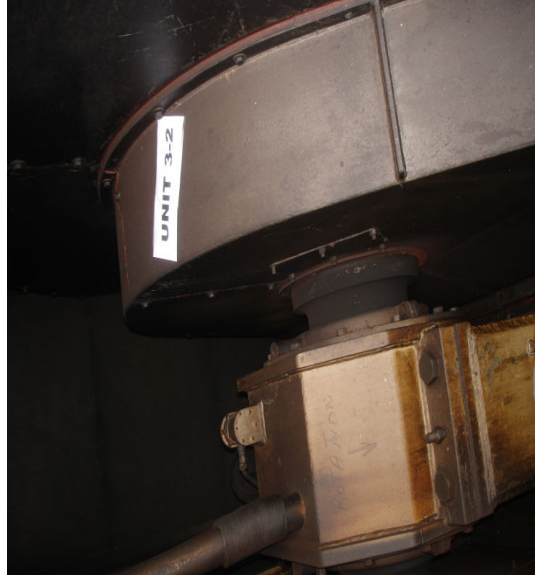
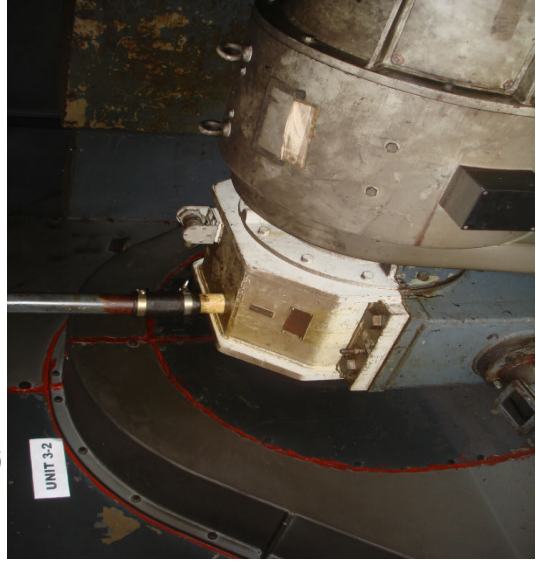
FORM K COD JEC-114 (1964)  
PHASES 3 POLES 2  
POWER FACTOR 0.8  
CONN. Y  
ARMATURE AMPERS 1211  
FIELD AMPERS 240  
DATE 1973







# GENERATORS



## BRUSH GENERATOR (EX-UNIT MAY 3-2)

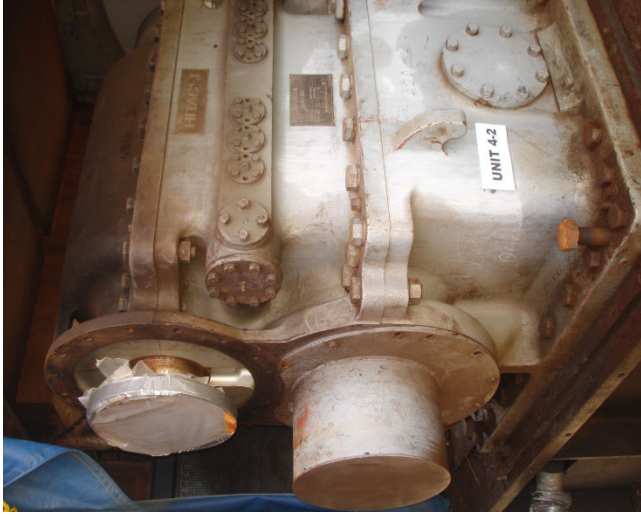
TYPE EFZB1LA  
OUTPUT KVA 27687  
FREQUENCY 60 HZ.  
VOLTAGE 13200  
EX. VOLTAGE 270  
MFG. NO. 161196-1

FORM K COD JEC-114 (1964)  
PHASES 3 POLES 2  
POWER FACTOR 0.8  
CONN. Y  
ARMATURE AMPERS 1211  
FIELD AMPERS 240  
DATE 1973





# REDUCTION GEARS



## HITACHI GEAR UNIT (EX-UNIT MAY 4-2)

**TYPE GNX60C**

**RATING 28000 KW**

**RATIO 1.415**

**MFG. NO. 94K31420-2**

**OPERATING HOURS:**

**INPUT SPEED 5094 RPM**

**OUTPUT SPEED 3600 RPM**

**DATE 1994**



# REDUCTION GEARS



## LUFKIN GEARS (EX-UNIT MAY 3-1)

MODEL NO. NVQ2207C

SERIAL NO. 116197

ORDER NO. 200973

OPERATING HOURS:

RATIO 1.418..1

INPUT RPM 5105 (50458 KW)

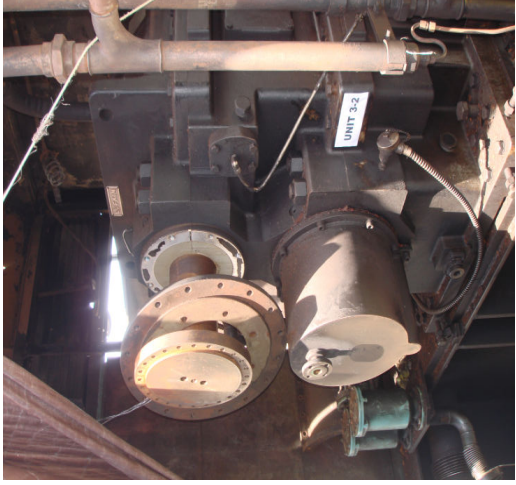
CAT. RATING 67665 HP

SER. FACTOR 1.8 (28001 KW)

SERVICE RATING 37550 HP



# REDUCTION GEARS



## LUFKIN GEARS (EX-UNIT MAY 3-2)

MODEL NO. NVQ2207C

SERIAL NO. 12718

ORDER NO. 861196

OPERATING HOURS:

RATIO 1.418..1

INPUT RPM 5105 (50458 KW)

CAT. RATING 67665 HP

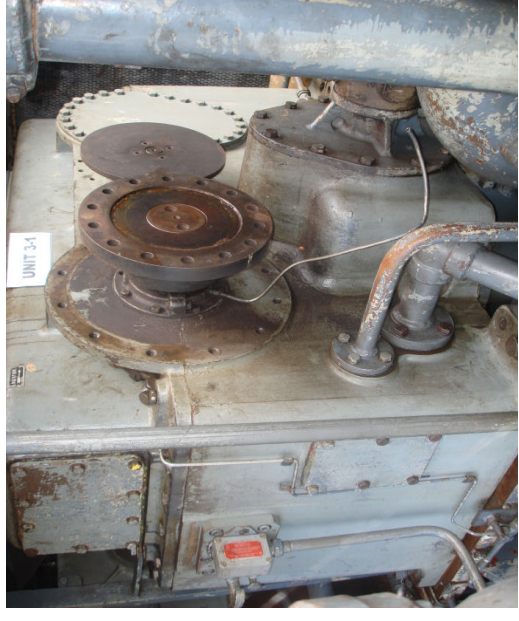
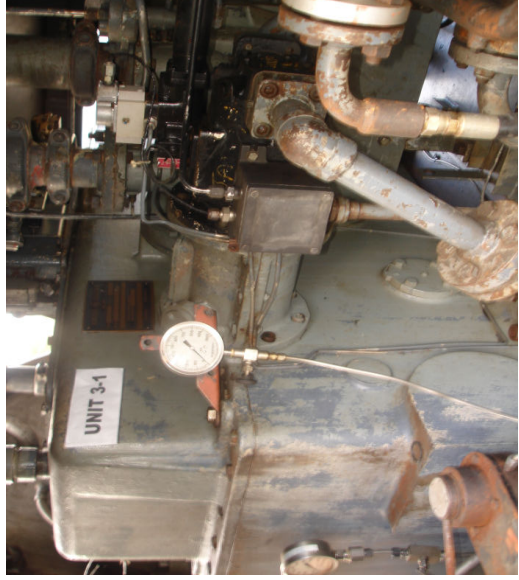
SER. FACTOR 1.8 (28001 KW)

SERVICE RATING 37550 HP





# ACCESSORY GEAR BOXES



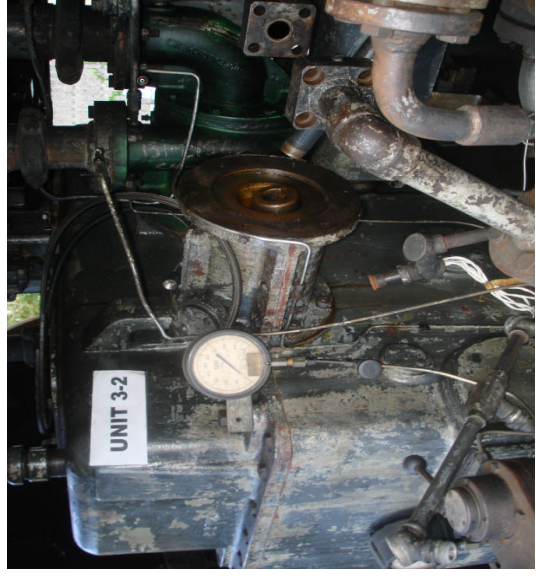
## GENERAL ELECTRIC GEAR UNIT (EX-UNIT MAY 3-1)

TYPE A 500 - AG 2 DM SERIAL NO. 217898  
RATING 479 HP, 5100 / 3583 / 1884 / 6003 / 1415 RPM  
INSTRUCTIONS GEK 25850  
226A1924-1  
OPERATING HOURS:





# ACCESORY GEAR BOXES



## •JOHN BROWN ENGINEERING GEAR UNIT (EX-UNIT MAY 3-1)

MANUFACTURED BY  
JOHN BROWN ENGINEERING (CLYDEBANK) LTD  
UNDER LICENCE FROM GENERAL ELECTRIC COMPANY U.S.A.  
DESIGNED BY  
THE GENERAL ELECTRIC COMPANY GEAR DEPARTMENT  
LYNN. MASS.  
U.S.A.

TYPE – A500-BG2BW

SERIAL NO. J-568

DRAWING NO. 663E201







# DIESEL ENGINES



## DIESEL ENGINES

**MODEL 7123-7000**

**DWG. 185A1418P1**

**600 HP**

**AVAILABLE FOR SALE: 4**







# TRANSFORMERS



**Westinghouse**

**THREE PHASE**

**TYPE SL**

**60 HERTZ**

**LOAD TAP CHANGING**

**AUTO TRANSFORMER**

**CLASS OA/FA/FOA**

**L. SPEC. 879441**

**SERIAL RHP-55131**

**INSTRUCTION BOOK**

**RHP-3513**

**AVAILABLE FOR SALE: 1**

